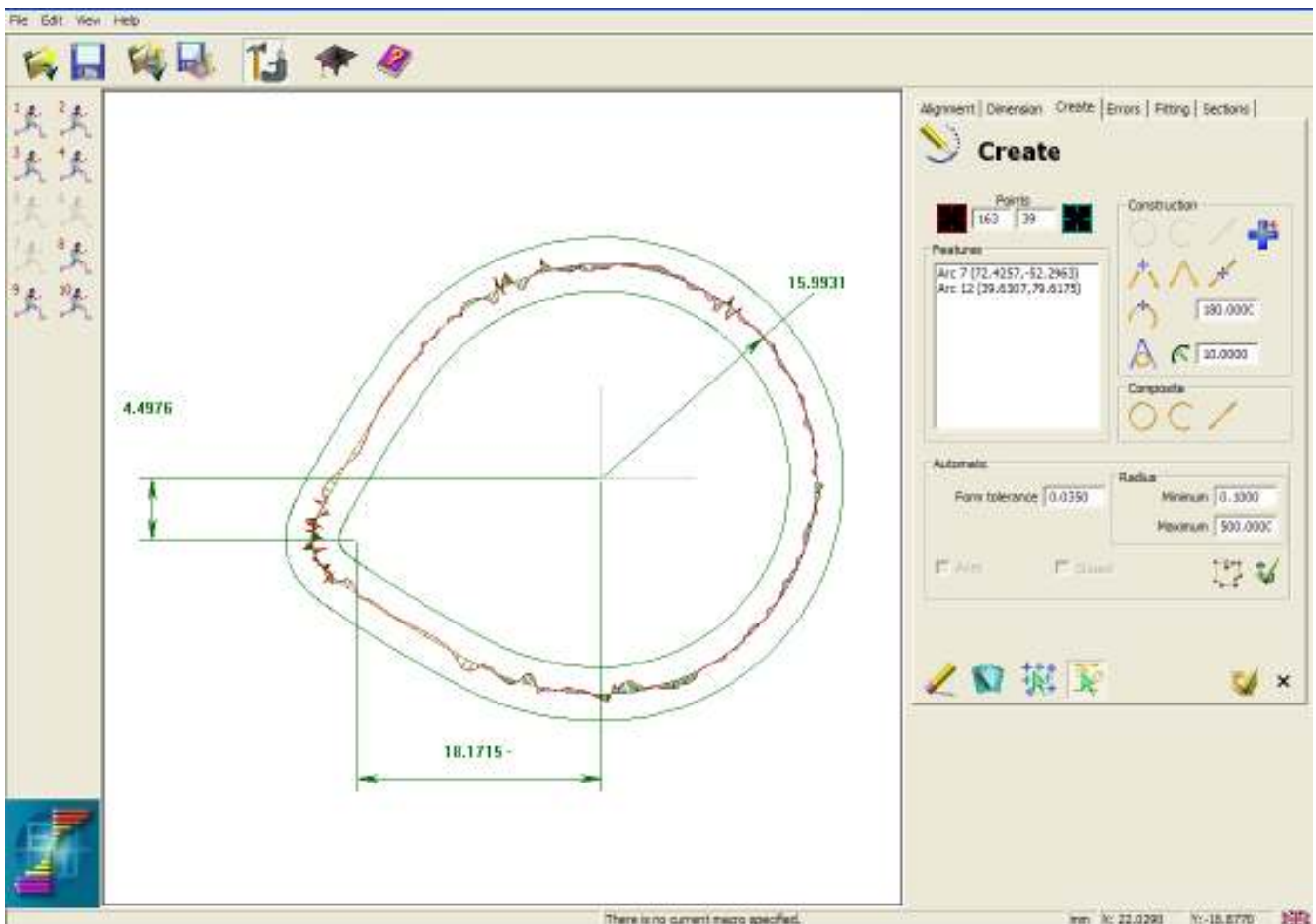




CONTOUR AND GEOMETRIC ANALYSIS SOFTWARE FOR CONTACT AND NON-CONTACT APPLICATIONS FROM ELEY METROLOGY (SOFTWARE) LIMITED



True Shape can:

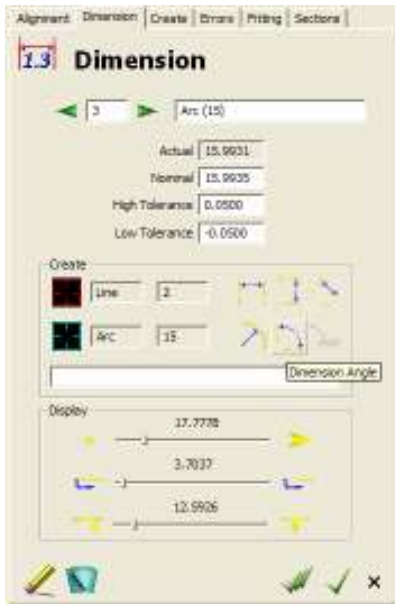
- Compare Measured Data to Nominal Form
- Fit Data to a Template
- Create Template from Data
- Fit to Specific Features
- Fit with Constrained Degrees of Freedom
- Fit to Any Alignment
- Fit using Different Methods
- Generate Conditional Reports

True Shape has:

- Easy to Use Interface
- Multiple Cad Formats
- Multiple Data Formats
- Comprehensive Macro Language
- Report Customisation
- Full Dimensioning Facility
- Run-time Switchable languages
- Independent Axis Scaling



True Shape is a 32bit Contour and geometric analysis software, for use with both contact and non-contact measuring applications. It has multiple CAD and Data import facilities together with almost limitless fitting capabilities. The easy to use interface and macro facilities ensure a smooth learning curve giving straightforward integration into either a production or 'one-off' environment. Comprehensive graphical and dimensional reporting facilities ensure that the output clear and easy to understand for users and customers alike.



- Right hand dialogue boxes with large clear icons, and tabs for changing from one to another, give easy access for dimensioning, creating templates, error customisation, fitting and sectional analysis.

- The Dimension tab allows linear dimensions in either axis or a combination of both, as well as radial diameter and angular dimensions, with tolerancing facilities and the flexibility to customise the graphical representation.

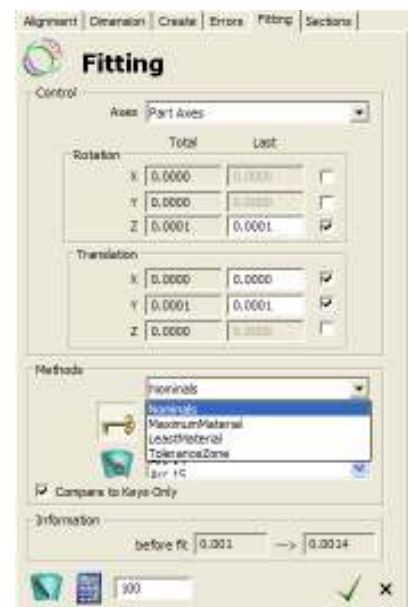
- The Create tab gives the ability to make a template of geometric features from measured data. Combined with the ability to edit these features to give many of the capabilities of a 2D CAD system.

- The Errors and Section tabs ensure the operator has all of the tools required to give a comprehensive and meaningful graphical output.

- A 3-button mouse gives access to dynamic screen manipulation (Zoom Pan and Rotate) as well as a 'right-click' facility for turning on or off the various elements of the graphical display.

- CAD import formats are DXF & Iges for 2D, and VDA & Iges for 3D applications. There is also a CAD export facility for created features in DXF and Iges formats.

- Fitting of data points to a CAD template can be done by various methods, from simple fitting to 'nominals' through fitting to maximum or minimum material condition, to 'tolerance zone' fitting where constantly changing tolerances from 2 CAD files can be used. There is also the capability to constrain the degrees of freedom that are permitted within the fitting routines.



- Overall the Ergonomic design of **True Shape** is intended to give the operator a fast and easy to use software package with all of the capabilities a fitting software should possess.